

2014 eMeasure Flows
Cover Page

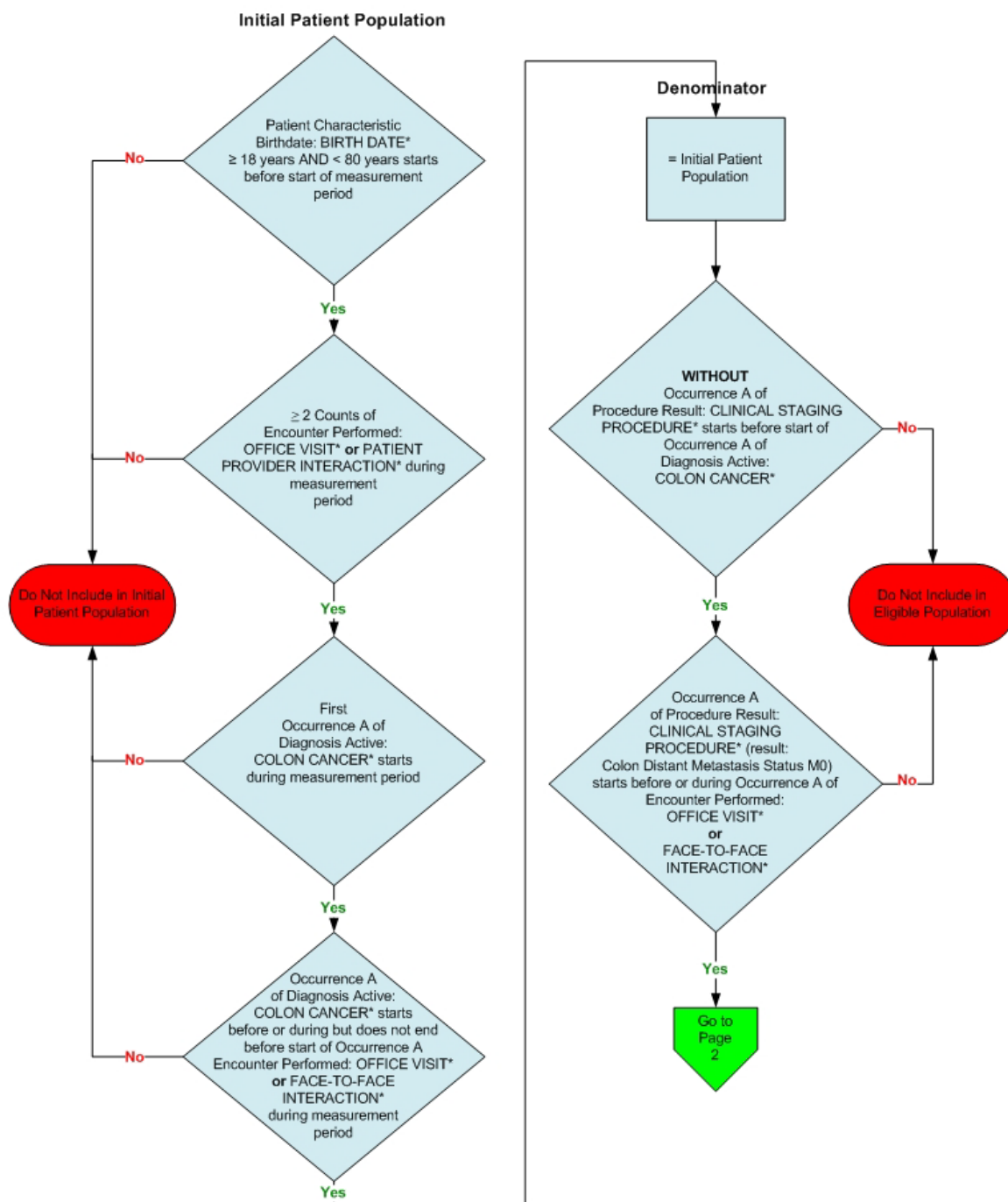
For eligible professionals reporting EHR clinical quality measures for Meaningful Use (MU) only (Option #1) in 2014, the following must be included in the submitted file(s):

- 1 – Rendering NPI and TIN on QRDA Category III files
- 2 – Payers for all eligible patients identified on QRDA Category III files
- 3 – All of the identifiers for the eMeasures the eligible professional or group practice intends to report must be included in the appropriate fields of the QRDA Category III files even if they do not have any eligible patients for those eMeasures
- 4 – Performance rate(s) (or a measure observation value) must be included in the QRDA Category III file for every eMeasure the eligible professional intended to report according to the performance rate (or measure observation) algorithms provided in each of the flows
- 5 – For every patient evaluated for the eMeasures also identify payer, race, ethnicity and sex.

For eligible professionals and group practices reporting EHR clinical quality measures for Meaningful Use (MU) and the Physician Quality Reporting System (PQRS) (Option #2) in 2014, the following must be included in the submitted file(s):

- 1 – Rendering NPI and TIN on the appropriate fields of the QRDA Category I or QRDA Category III files for eligible professionals reporting as *individuals* **OR** submission of all NPIs within the TIN when reporting as a *group practice*
- 2 – At least **one** Medicare Part B beneficiary that is eligible for at least one of the eMeasures either via QRDA Category I or III files
- 3 – Valid HIC# for Medicare beneficiaries on QRDA Category I files
- 4 – Payers for all eligible patients identified on QRDA Category I or III files
- 5 – All of the identifiers for the eMeasures the eligible professional or group practice intends to report must be included in the appropriate fields of the QRDA Category I or III files even if they do not have any eligible patients for those eMeasures
- 6 – Performance rate(s) (or a measure observation value) must be included in the QRDA Category III file for every eMeasure the eligible professional intended to report according to the performance rate (or measure observation) algorithms provided in each of the flows
- 7 – All of the detailed data pertaining to the eMeasures the eligible professional intends to report must be included in the patient-level QRDA Category I files so that the system may generate accurate performance rate(s) (or a measure observation value)
- 8 – For every patient evaluated for the eMeasures also identify payer, race, ethnicity and sex.

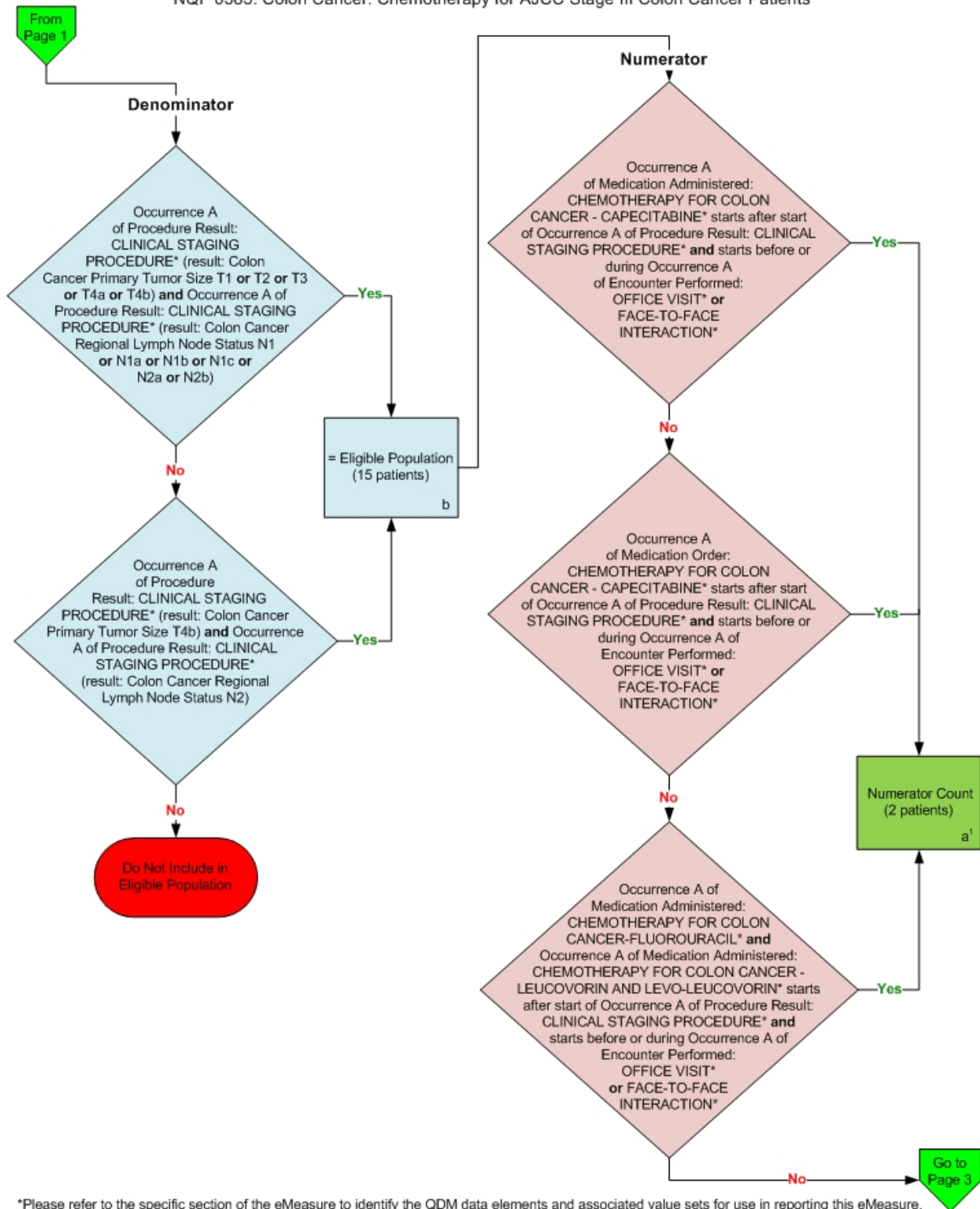
2014 eMeasure Flows
eMeasure Identifier: 141
NQF 0385: Colon Cancer: Chemotherapy for AJCC Stage III Colon Cancer Patients



*Please refer to the specific section of the eMeasure to identify the QDM data elements and associated value sets for use in reporting this eMeasure.

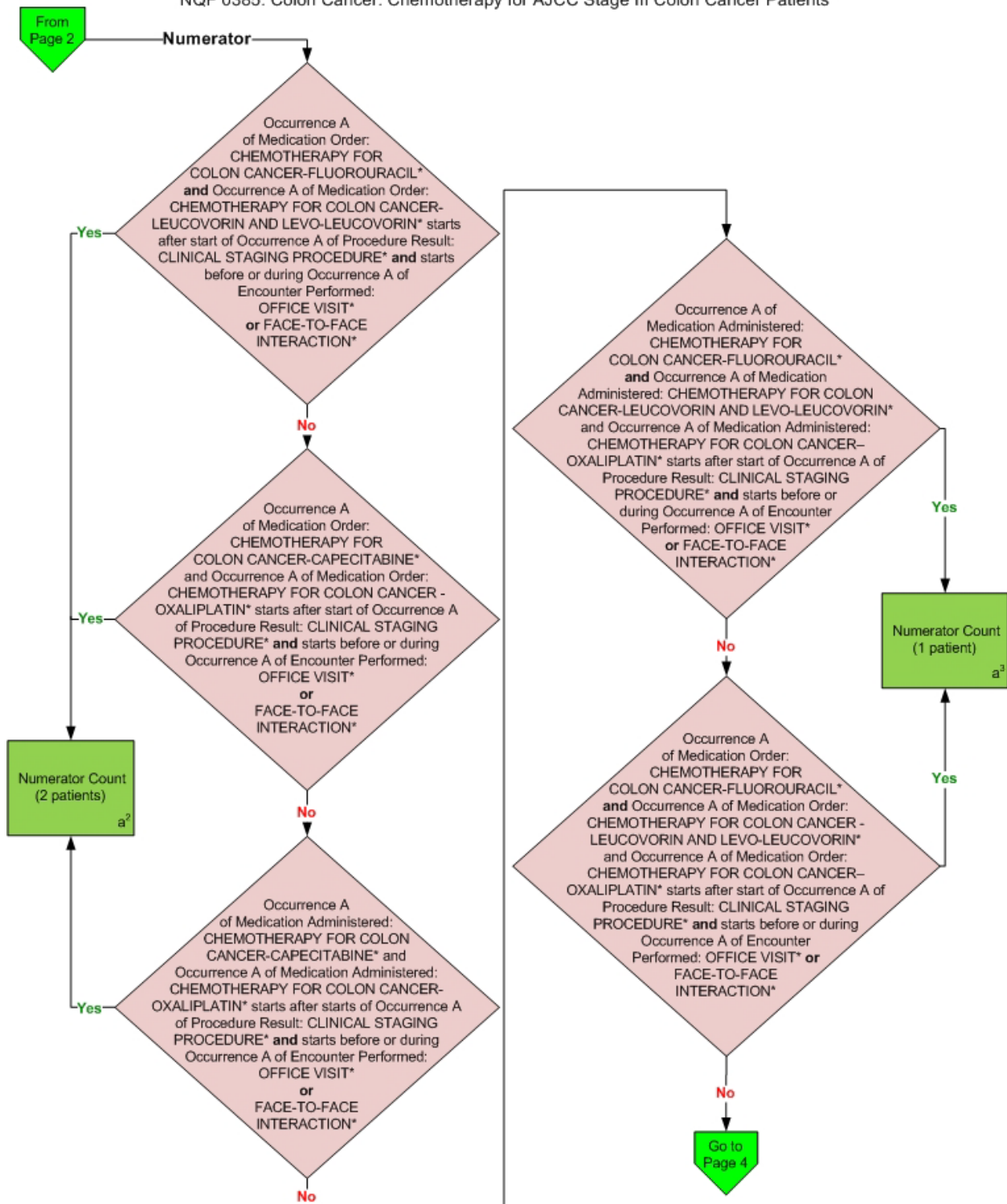
2014 eMeasure Flows
eMeasure Identifier: 141

NQF 0385: Colon Cancer: Chemotherapy for AJCC Stage III Colon Cancer Patients



2014 eMeasure Flows
eMeasure Identifier: 141

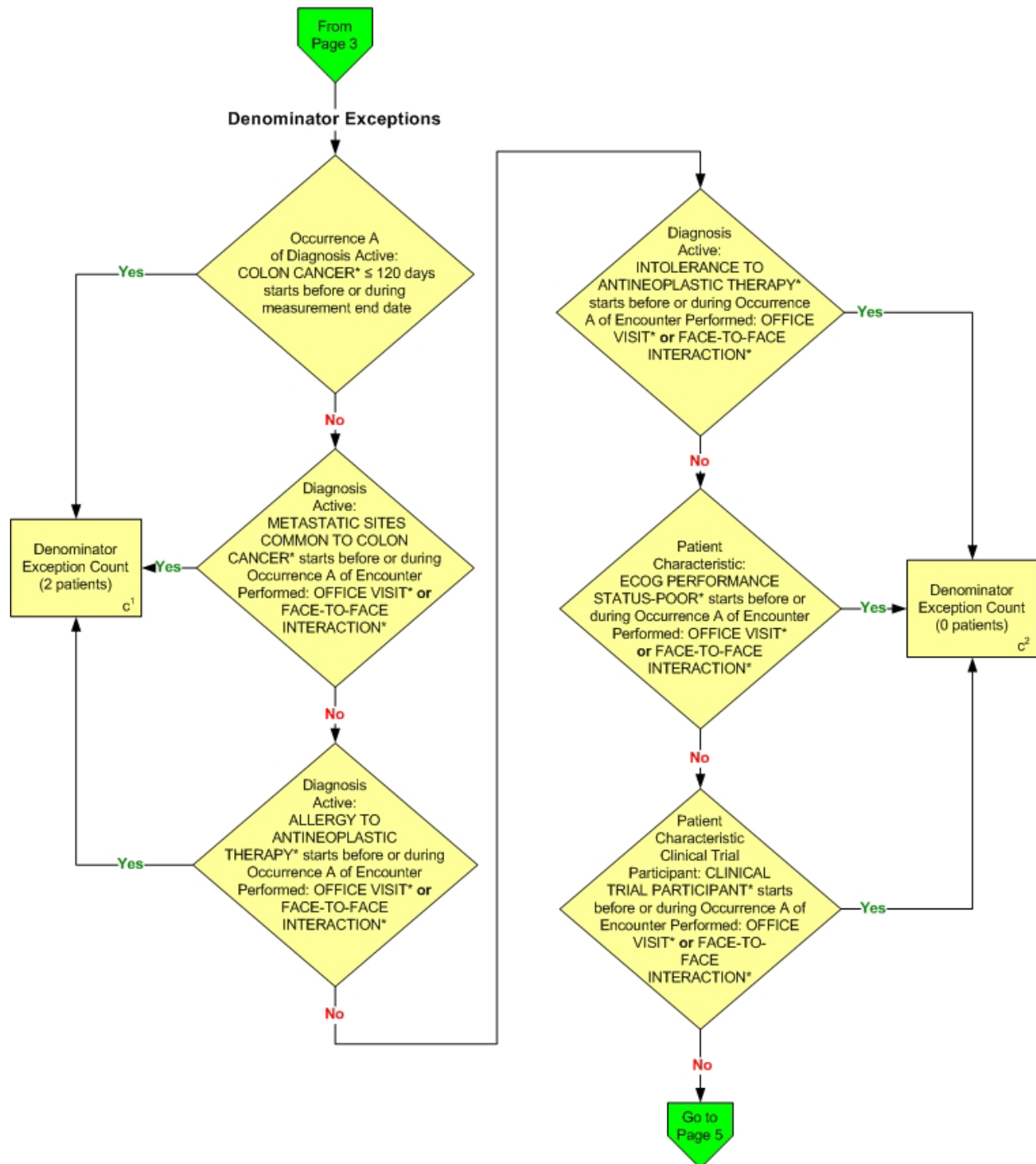
NQF 0385: Colon Cancer: Chemotherapy for AJCC Stage III Colon Cancer Patients



*Please refer to the specific section of the eMeasure to identify the QDM data elements and associated value sets for use in reporting this eMeasure.

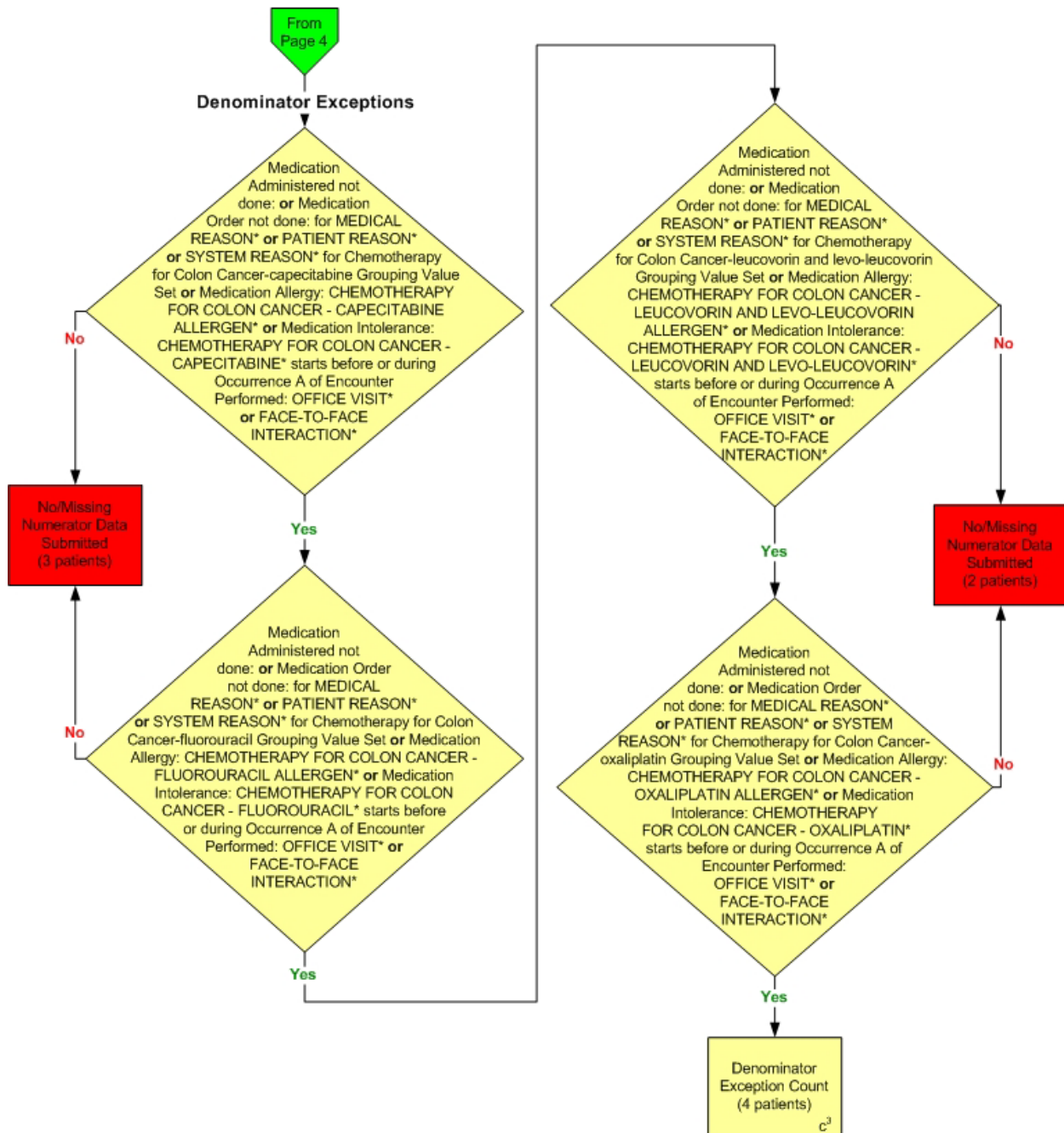
2014 eMeasure Flows
eMeasure Identifier: 141

NQF 0385: Colon Cancer: Chemotherapy for AJCC Stage III Colon Cancer Patients



*Please refer to the specific sections of the eMeasure to identify the QDM data elements and associated value sets for use in reporting this eMeasure.

2014 eMeasure Flows
eMeasure Identifier: 141
NQF 0385: Colon Cancer: Chemotherapy for AJCC Stage III Colon Cancer Patients



*Please refer to the specific section of the eMeasure to identify the QDM data elements and associated value sets for use in reporting this eMeasure.

2014 eMeasure Flows
eMeasure Identifier: 141
NQF 0385: Colon Cancer: Chemotherapy for AJCC Stage III Colon Cancer Patients

SAMPLE CALCULATION:

Performance Rate =

$$\frac{\text{Numerator (a}^1 + \text{a}^2 + \text{a}^3 = 5 \text{ patients)}}{\text{Denominator (b=15 patients) - Denominator Exclusions (N/A) - Denominator Exceptions (c}^1 + \text{c}^2 + \text{c}^3 = 6 \text{ patients)}} = 55.56\%$$

2014 eMeasure Flows
eMeasure Identifier: 141

NQF 0385: Colon Cancer: Chemotherapy for AJCC Stage III Colon Cancer Patients

Please refer to the specific section of the eMeasure to identify the QDM data elements and associated value sets for use in reporting this eMeasure.

1. Start Initial Patient Population
2. Check Patient Characteristic Birthdate:
 - a. If QDM data element, BIRTH DATE, is greater than or equal to 18 years and less than 80 years starts before start of measurement period equals No, do not include in Initial Patient Population. Stop Processing.
 - b. If QDM data element, BIRTH DATE, is greater than or equal to 18 years and less than 80 years starts before start of measurement period equals Yes, go to check Encounters Performed.
3. Check Encounter Performed:
 - a. If greater than or equal to 2 counts of QDM data element, OFFICE VISIT, or PATIENT PROVIDER INTERACTION, during measurement period equals Yes, go to check Diagnosis Active.
 - b. If greater than or equal to 2 counts of QDM data element, OFFICE VISIT, or PATIENT PROVIDER INTERACTION, during measurement period equals No, do not include in the Initial Patient Population. Stop Processing.
4. Check Diagnosis Active:
 - a. If First Occurrence A of QDM data element, COLON CANCER, starts during measurement period equals Yes, go to check Diagnosis Active.
 - b. If First Occurrence A of QDM data element, COLON CANCER, starts during measurement period equals No, do not include in the Initial Patient Population. Stop Processing.
5. Check Diagnosis Active:
 - a. If Occurrence A of QDM data element, COLON CANCER, starts before or during but does not end before start of Occurrence A of Encounter Performed QDM data element, OFFICE VISIT, or FACE-TO-FACE INTERACTION, during measurement period equals Yes, go to Denominator.
 - b. If Occurrence A of QDM data element, COLON CANCER, starts before or during but does not end before start of Occurrence A of Encounter Performed QDM data element, OFFICE VISIT, or FACE-TO-FACE INTERACTION, during measurement period equals No, do not include in the Initial Patient Population. Stop Processing.
6. Start Denominator
 - a. Denominator equals the Initial Patient Population. Go to check Procedure Result.
7. Check Procedure Result:
 - a. If Without Occurrence A of QDM data element, CLINICAL STAGING PROCEDURE, starts before start of Occurrence A of Diagnosis Active QDM data element, COLON CANCER, equals Yes, go to check Procedure Result.
 - b. If Without Occurrence A of QDM data element, CLINICAL STAGING PROCEDURE, starts before start of Occurrence A of Diagnosis Active QDM data

element, COLON CANCER, equals No, do not include in the Denominator Eligible Population. Stop Processing.

8. Check Procedure Result:
 - a. If Occurrence A of QDM data element CLINICAL STAGING PROCEDURE (result: Colon Distant Metastasis Status M0) starts before or during Occurrence A of Encounter Performed QDM data element, OFFICE VISIT, or FACE-TO-FACE INTERACTION, equals Yes, go to check Procedure Result.
 - b. If Occurrence A of QDM data element CLINICAL STAGING PROCEDURE (result: Colon Distant Metastasis Status M0) starts before or during Occurrence A of Encounter Performed QDM data element, OFFICE VISIT, or FACE-TO-FACE INTERACTION, equals No, do not include in the Denominator Eligible Population. Stop Processing.
9. Check Procedure Result:
 - a. If Occurrence A of QDM data element, CLINICAL STAGING PROCEDURE (result: Colon Cancer Primary Tumor Size T1 or T2 or T3 or T4a or T4b) and Occurrence A of QDM data element, CLINICAL STAGING PROCEDURE (result: Colon Cancer Regional Lymph Node Status N1 or N1a or N1b or N1c or N2a or N2b) equals Yes, include in Denominator Eligible Population. Denominator is represented by letter B in the sample calculation listed at the end of this document. Letter B equals 15 patients in the sample calculation.
 - b. If Occurrence A of QDM data element, CLINICAL STAGING PROCEDURE (result: Colon Cancer Primary Tumor Size T1 or T2 or T3 or T4a or T4b) and Occurrence A of QDM data element, CLINICAL STAGING PROCEDURE (result: Colon Cancer Regional Lymph Node Status N1 or N1a or N1b or N1c or N2a or N2b) equals No, go to check Procedure Result.
10. Check Procedure Result:
 - a. If Occurrence A of QDM data element, CLINICAL STAGING PROCEDURE (result: Colon Cancer Primary Tumor Size T4b) and Occurrence A of QDM Data Element, CLINICAL STAGING PROCEDURE (result: Colon Cancer Regional Lymph Node Status N2), equals Yes, include in Denominator Eligible Population. Denominator is represented by letter B in the sample calculation listed at the end of this document. Letter B equals 15 patients in the sample calculation.
 - b. If Occurrence A of QDM data element, CLINICAL STAGING PROCEDURE (result: Colon Cancer Primary Tumor Size T4b) and Occurrence A of QDM Data Element, CLINICAL STAGING PROCEDURE (result: Colon Cancer Regional Lymph Node Status N2), equals No, do not include in the Denominator Eligible Population. Stop Processing.
11. Start Numerator
12. Check Medication Administered:
 - a. If Occurrence A of QDM data element, CHEMOTHERAPY FOR COLON CANCER – CAPECITABINE, starts after start of Occurrence A of Procedure Result QDM data element, CLINICAL STAGING PROCEDURE, and starts before or during Occurrence A of Encounter Performed QDM data element, OFFICE VISIT, or FACE-TO-FACE INTERACTION, equals Yes, include in Numerator Count. Numerator is represented by letter A¹ in the sample calculation listed at the end of this document. Letter A¹ equals 2 patients in the sample calculation.
 - b. If Occurrence A of QDM data element, CHEMOTHERAPY FOR COLON CANCER – CAPECITABINE, starts after start of Occurrence A of Procedure

Result QDM data element, CLINICAL STAGING PROCEDURE, and starts before or during Occurrence A of Encounter Performed QDM data element, OFFICE VISIT, or FACE-TO-FACE INTERACTION, equals No, go to check Medication Order.

13. Check Medication Order:
 - a. If Occurrence A of QDM data element, CHEMOTHERAPY FOR COLON CANCER – CAPECITABINE, starts after start of Occurrence A of Procedure Result QDM data element, CLINICAL STAGING PROCEDURE, and starts before or during Occurrence A of Encounter Performed QDM data element, OFFICE VISIT, or FACE-TO-FACE INTERACTION, equals Yes, include in Numerator Count. Numerator is represented by letter A¹ in the sample calculation listed at the end of this document. Letter A¹ equals 2 patients in the sample calculation.
 - b. If Occurrence A of QDM data element, CHEMOTHERAPY FOR COLON CANCER – CAPECITABINE, starts after start of Occurrence A of Procedure Result QDM data element, CLINICAL STAGING PROCEDURE, and starts before or during Occurrence A of Encounter Performed QDM data element, OFFICE VISIT, or FACE-TO-FACE INTERACTION, equals No, go to check Medication Administered
14. Check Medication Administered:
 - a. If Occurrence A of QDM data element, CHEMOTHERAPY FOR COLON CANCER-FLUOROURACIL, and Occurrence A of QDM data element, CHEMOTHERAPY FOR COLON CANCER-LEUCOVORIN AND LEVO-LEUCOVORIN starts after start of Occurrence A of Procedure Result QDM data element, CLINICAL STAGING PROCEDURE, and starts before or during Occurrence A of Encounter Performed QDM data element, OFFICE VISIT, or FACE-TO-FACE INTERACTION, equals Yes, include in Numerator Count. Numerator is represented by letter A¹ in the sample calculation listed at the end of this document. Letter A¹ equals 2 patients in the sample calculation.
 - b. If Occurrence A of QDM data element, CHEMOTHERAPY FOR COLON CANCER-FLUOROURACIL, and Occurrence A of QDM data element, CHEMOTHERAPY FOR COLON CANCER-LEUCOVORIN AND LEVO-LEUCOVORIN starts after start of Occurrence A of Procedure Result QDM data element, CLINICAL STAGING PROCEDURE, and starts before or during Occurrence A of Encounter Performed QDM data element, OFFICE VISIT, or FACE-TO-FACE INTERACTION, equals No, go to check Medication Order.
15. Check Medication Order:
 - a. If Occurrence A of QDM data element, CHEMOTHERAPY FOR COLON CANCER-FLUOROURACIL, and Occurrence A of QDM data element, CHEMOTHERAPY FOR COLON CANCER-LEUCOVORIN AND LEVO-LEUCOVORIN starts after start of Occurrence A of Procedure Result QDM data element, CLINICAL STAGING PROCEDURE, and starts before or during Occurrence A of Encounter Performed QDM data element, OFFICE VISIT, or FACE-TO-FACE INTERACTION, equals Yes, include in Numerator Count. Numerator is represented by letter A² in the sample calculation listed at the end of this document. Letter A² equals 2 patients in the sample calculation.
 - b. If Occurrence A of QDM data element, CHEMOTHERAPY FOR COLON CANCER-FLUOROURACIL, and Occurrence A of QDM data element, CHEMOTHERAPY FOR COLON CANCER-LEUCOVORIN AND LEVO-LEUCOVORIN starts after start of Occurrence A of Procedure Result QDM data element, CLINICAL STAGING PROCEDURE, and starts before or during

Occurrence A of Encounter Performed QDM data element, OFFICE VISIT, or FACE-TO-FACE INTERACTION, equals No, go to check Medication Order.

16. Check Medication Order:
 - a. If Occurrence A of QDM data element, CHEMOTHERAPY FOR COLON CANCER-CAPECITABINE, and Occurrence A of QDM data element, CHEMOTHERAPY FOR COLON CANCER-OXALIPLATIN starts after start of Occurrence A of Procedure Result QDM data element, CLINICAL STAGING PROCEDURE, and starts before or during Occurrence A of Encounter Performed QDM data element, OFFICE VISIT, or FACE-TO-FACE INTERACTION, equals Yes, include in Numerator Count. Numerator is represented by letter A² in the sample calculation listed at the end of this document. Letter A² equals 2 patients in the sample calculation.
 - b. If Occurrence A of QDM data element, CHEMOTHERAPY FOR COLON CANCER- CAPECITABINE, and Occurrence A of QDM data element, CHEMOTHERAPY FOR COLON CANCER- OXALIPLATIN starts after start of Occurrence A of Procedure Result QDM data element, CLINICAL STAGING PROCEDURE, and starts before or during Occurrence A of Encounter Performed QDM data element, OFFICE VISIT, or FACE-TO-FACE INTERACTION, equals No, go to check Medication Administered.
17. Check Medication Administered:
 - a. If Occurrence A of QDM data element, CHEMOTHERAPY FOR COLON CANCER-CAPECITABINE, and Occurrence A of QDM data element, CHEMOTHERAPY FOR COLON CANCER-OXALIPLATIN starts after start of Occurrence A of Procedure Result QDM data element, CLINICAL STAGING PROCEDURE, and starts before or during Occurrence A of Encounter Performed QDM data element, OFFICE VISIT, or FACE-TO-FACE INTERACTION, equals Yes, include in Numerator Count. Numerator is represented by letter A² in the sample calculation listed at the end of this document. Letter A² equals 2 patients in the sample calculation.
 - b. If Occurrence A of QDM data element, CHEMOTHERAPY FOR COLON CANCER- CAPECITABINE, and Occurrence A of QDM data element, CHEMOTHERAPY FOR COLON CANCER- OXALIPLATIN starts after start of Occurrence A of Procedure Result QDM data element, CLINICAL STAGING PROCEDURE, and starts before or during Occurrence A of Encounter Performed QDM data element, OFFICE VISIT, or FACE-TO-FACE INTERACTION, equals No, go to check Medication Administered.
18. Check Medication Administered:
 - a. If Occurrence A of QDM data element, CHEMOTHERAPY FOR COLON CANCER-FLUOROURACIL, and Occurrence A of QDM data element, CHEMOTHERAPY FOR COLON CANCER-LEUCOVORIN AND LEVO-LEUCOVORIN, and Occurrence A of QDM data element, CHEMOTHERAPY FOR COLON CANCER-OXALIPLATIN, starts after start of Occurrence A of Procedure Result QDM data element, CLINICAL STAGING PROCEDURE, and starts before or during Occurrence A of Encounter Performed QDM data element, OFFICE VISIT, or FACE-TO-FACE INTERACTION, equals Yes, include in Numerator Count. Numerator is represented by letter A³ in the sample calculation listed at the end of this document. Letter A³ equals 1 patient in the sample calculation.
 - b. If Occurrence A of QDM data element, CHEMOTHERAPY FOR COLON CANCER-FLUOROURACIL, and Occurrence A of QDM data element, CHEMOTHERAPY FOR COLON CANCER-LEUCOVORIN AND LEVO-

LEUCOVORIN, and Occurrence A of QDM data element, CHEMOTHERAPY FOR COLON CANCER-OXALIPLATIN, starts after start of Occurrence A of Procedure Result QDM data element, CLINICAL STAGING PROCEDURE, and starts before or during Occurrence A of Encounter Performed QDM data element, OFFICE VISIT, or FACE-TO-FACE INTERACTION, equals No, go to check Medication Order.

19. Check Medication Order:

- a. If Occurrence A of QDM data element, CHEMOTHERAPY FOR COLON CANCER-FLUOROURACIL, and Occurrence A of QDM data element, CHEMOTHERAPY FOR COLON CANCER-LEUCOVORIN AND LEVO-LEUCOVORIN, and Occurrence A of QDM data element, CHEMOTHERAPY FOR COLON CANCER-OXALIPLATIN, starts after start of Occurrence A of Procedure Result QDM data element, CLINICAL STAGING PROCEDURE, and starts before or during Occurrence A of Encounter Performed QDM data element, OFFICE VISIT, or FACE-TO-FACE INTERACTION, equals Yes, include in Numerator Count. Numerator is represented by letter A³ in the sample calculation listed at the end of this document. Letter A³ equals 1 patient in the sample calculation.
- b. If Occurrence A of QDM data element, CHEMOTHERAPY FOR COLON CANCER-FLUOROURACIL, and Occurrence A of QDM data element, CHEMOTHERAPY FOR COLON CANCER-LEUCOVORIN AND LEVO-LEUCOVORIN, and Occurrence A of QDM data element, CHEMOTHERAPY FOR COLON CANCER-OXALIPLATIN, starts after start of Occurrence A of Procedure Result QDM data element, CLINICAL STAGING PROCEDURE, and starts before or during Occurrence A of Encounter Performed QDM data element, OFFICE VISIT, or FACE-TO-FACE INTERACTION, equals No, go to Denominator Exceptions.

20. Start Denominator Exceptions

21. Check Diagnosis Active:

- a. If Occurrence A of QDM data element, COLON CANCER, less than or equal to 120 days starts before or during measurement end date equals Yes, include in Denominator Exception count. Denominator Exception is represented by letter C1 in the sample calculation listed at the end of this document. Letter C1 equals 2 patients in the sample calculation.
- b. If Occurrence A of QDM data element, COLON CANCER, less than or equal to 120 days starts before or during measurement end date equals No, go to check Diagnosis Active.

22. Check Diagnosis Active:

- a. If QDM data element, METASTATIC SITES COMMON TO COLON CANCER, starts before or during Occurrence A of Encounter Performed QDM data element, OFFICE VISIT, or FACE-TO-FACE INTERACTION, equals Yes include in Denominator Exception count. Denominator Exception is represented by letter C1 in the sample calculation listed at the end of this document. Letter C1 equals 2 patients in the sample calculation.
- b. If QDM data element, METASTATIC SITES COMMON TO COLON CANCER, starts before or during Occurrence A of Encounter Performed QDM data element, OFFICE VISIT, or FACE-TO-FACE INTERACTION, equals No, go to check Diagnosis Active.

23. Check Diagnosis Active:

- a. If QDM data element, ALLERGY TO ANTINEOPLASTIC THERAPY, starts before or during Occurrence A of Encounter Performed QDM data element, OFFICE VISIT, or FACE-TO-FACE INTERACTION, equals Yes include in Denominator Exception count. Denominator Exception is represented by letter C1 in the sample calculation listed at the end of this document. Letter C1 equals 2 patients in the sample calculation.
 - b. If QDM data element, ALLERGY TO ANTINEOPLASTIC THERAPY, starts before or during Occurrence A of Encounter Performed QDM data element, OFFICE VISIT, or FACE-TO-FACE INTERACTION, equals No, go to check Diagnosis Active.
- 24. Check for Diagnosis Active:
 - a. If QDM data element, INTOLERANCE TO ANTINEOPLASTIC THERAPY, starts before or during Occurrence A of Encounter Performed QDM data element, OFFICE VISIT, or FACE-TO-FACE INTERACTION, equals Yes include in Denominator Exception count. Denominator Exception is represented by letter C2 in the sample calculation listed at the end of this document. Letter C2 equals 0 patients in the sample calculation.
 - b. If QDM data element, INTOLERANCE TO ANTINEOPLASTIC THERAPY, starts before or during Occurrence A of Encounter Performed QDM data element, OFFICE VISIT, or FACE-TO-FACE INTERACTION, equals No, go to check Patient Characteristic.
- 25. Check Patient Characteristic:
 - a. If QDM data element, ECOG PERFORMANCE STATUS-POOR, starts before or during Occurrence A of Encounter Performed QDM data element, OFFICE VISIT, or FACE-TO-FACE INTERACTION, equals Yes include in Denominator Exception count. Denominator Exception is represented by letter C2 in the sample calculation listed at the end of this document. Letter C2 equals 0 patients in the sample calculation.
 - b. If QDM data element, ECOG PERFORMANCE STATUS-POOR, starts before or during Occurrence A of Encounter Performed QDM data element, OFFICE VISIT, or FACE-TO-FACE INTERACTION, equals No, go to check Patient Characteristic Clinical Trial Participant.
- 26. Check Patient Characteristic Clinical Trial Participant:
 - a. If QDM data element, CLINICAL TRIAL PARTICIPANT, starts before or during Occurrence A of Encounter Performed QDM data element, OFFICE VISIT, or FACE-TO-FACE INTERACTION, equals Yes include in Denominator Exception count. Denominator Exception is represented by letter C2 in the sample calculation listed at the end of this document. Letter C2 equals 0 patients in the sample calculation.
 - b. If QDM data element, CLINICAL TRIAL PARTICIPANT, starts before or during Occurrence A of Encounter Performed QDM data element, OFFICE VISIT, or FACE-TO-FACE INTERACTION, equals No, go to check Medication Administered Not Done or Medication Order Not Done or Medication Allergy or Medication Intolerance.
- 27. Check Medication Administered Not Done or Medication Order Not Done or Medication Allergy or Medication Intolerance:
 - a. If Medication Administered not done or Medication Order not done QDM data element, MEDICAL REASON, or PATIENT REASON, or SYSTEM REASON, for Chemotherapy for Colon Cancer-capecitabine Grouping Value Set, or Medication Allergy QDM data element, CHEMOTHERAPY FOR COLON CANCER-

- CAPECITABINE, or Medication Intolerance QDM data element, CHEMOTHERAPY FOR COLON CANCER – CAPECITABINE, starts before or during Occurrence A of Encounter Performed QDM data element, OFFICE VISIT, or FACE-TO-FACE INTERACTION, equals Yes, go to check Medication Administered Not Done or Medication Order Not Done or Medication Allergy or Medication Intolerance.
- b. If Medication Administered not done or Medication Order not done QDM data element, MEDICAL REASON, or PATIENT REASON, or SYSTEM REASON, for Chemotherapy for Colon Cancer-capecitabine Grouping Value Set, or Medication Allergy QDM data element, CHEMOTHERAPY FOR COLON CANCER-CAPECITABINE, or Medication Intolerance QDM data element, CHEMOTHERAPY FOR COLON CANCER-CAPECITABINE, starts before or during Occurrence A of Encounter Performed QDM data element, OFFICE VISIT, or FACE-TO-FACE INTERACTION, equals No, include in the No/Missing Data Submitted Count. Stop processing.
28. Check Medication Administered Not Done or Medication Order Not Done or Medication Allergy or Medication Intolerance:
- a. If Medication Administered not done or Medication Order not done QDM data element, MEDICAL REASON, or PATIENT REASON, or SYSTEM REASON, for Chemotherapy for Colon Cancer-fluorouracil Grouping Value Set or Medication Allergy QDM data element, CHEMOTHERAPY FOR COLON CANCER-fluorouracil allergen, or Medication Intolerance QDM data element, CHEMOTHERAPY FOR COLON CANCER-FLUOROURACIL, starts before or during Occurrence A of Encounter Performed QDM data element, OFFICE VISIT, or FACE-TO-FACE INTERACTION, equals Yes, go to check Medication Administered Not Done or Medication Order Not Done or Medication Allergy or Medication Intolerance.
 - b. If Medication Administered not done or Medication Order not done QDM data element, MEDICAL REASON, or PATIENT REASON, or SYSTEM REASON, for Chemotherapy for Colon Cancer- fluorouracil Grouping Value Set or Medication Allergy QDM data element, CHEMOTHERAPY FOR COLON CANCER-fluorouracil allergen, or Medication Intolerance QDM data element, CHEMOTHERAPY FOR COLON CANCER- FLUOROURACIL, starts before or during Occurrence A of Encounter Performed QDM data element, OFFICE VISIT, or FACE-TO-FACE INTERACTION, equals No, include in the No/Missing Data Submitted Count. Stop processing.
29. Check Medication Administered Not Done or Medication Order Not Done or Medication Allergy or Medication Intolerance:
- a. If Medication Administered not done or Medication Order not done QDM data element, MEDICAL REASON, or PATIENT REASON, or SYSTEM REASON, for Chemotherapy for Colon Cancer-leucovorin and levo-leucovorin Grouping Value Set or Medication Allergy QDM data element, CHEMOTHERAPY FOR COLON CANCER-leucovorin and levo-leucovorin allergen, or Medication Intolerance QDM data element, CHEMOTHERAPY FOR COLON CANCER-LEUCOVORIN AND LEVO-LEUCOVORIN, starts before or during Occurrence A of Encounter Performed QDM data element, OFFICE VISIT, or FACE-TO-FACE INTERACTION, equals Yes, go to check Medication Administered Not Done or Medication Order Not Done or Medication Allergy or Medication Intolerance.
 - b. If Medication Administered not done or Medication Order not done QDM data element, MEDICAL REASON, or PATIENT REASON, or SYSTEM REASON, for Chemotherapy for Colon Cancer- leucovorin and levo-leucovorin Grouping Value Set or Medication Allergy QDM data element, CHEMOTHERAPY FOR COLON

CANCER-leucovorin and levo-leucovorin allergen, or Medication Intolerance QDM data element, CHEMOTHERAPY FOR COLON CANCER-LEUCOVORIN AND LEVO-LEUCOVORIN, starts before or during Occurrence A of Encounter Performed QDM data element, OFFICE VISIT, or FACE-TO-FACE INTERACTION, equals No, include in the No/Missing Data Submitted Count. Stop processing.

30. Check Medication Administered Not Done or Medication Order Not Done or Medication Allergy or Medication Intolerance:
 - a. If Medication Administered not done or Medication Order not done QDM data element, MEDICAL REASON, or PATIENT REASON, or SYSTEM REASON, for Chemotherapy for Colon Cancer-oxaliplatin Grouping Value Set or Medication Allergy QDM data element, CHEMOTHERAPY FOR COLON CANCER-oxaliplatin allergen, or Medication Intolerance QDM data element, CHEMOTHERAPY FOR COLON CANCER-OXALIPLATIN, starts before or during Occurrence A of Encounter Performed QDM data element, OFFICE VISIT, or FACE-TO-FACE INTERACTION, equals Yes, include in Denominator Exception count. Denominator Exception is represented by letter C3 in the sample calculation listed at the end of this document. Letter C3 equals 4 patients in the sample calculation.
 - b. If Medication Administered not done or Medication Order not done QDM data element, MEDICAL REASON, or PATIENT REASON, or SYSTEM REASON, for Chemotherapy for Colon Cancer-oxaliplatin Grouping Value Set or Medication Allergy QDM data element, CHEMOTHERAPY FOR COLON CANCER-oxaliplatin allergen, or Medication Intolerance QDM data element, CHEMOTHERAPY FOR COLON CANCER- OXALIPLATIN, starts before or during Occurrence A of Encounter Performed QDM data element, OFFICE VISIT, or FACE-TO-FACE INTERACTION, equals No, include in the No/Missing Data Submitted Count. Stop processing.

SAMPLE CALCULATION:

Performance Rate =

Numerator ($a^1 + a^2 + a^3 = 5$ patients)

÷

Denominator ($b = 15$ patients) – *Denominator Exclusions (N/A)* – Denominator Exceptions ($c^1 + c^2 + c^3 = 6$ patients)
= **55.56%**